

**NEWFORM**  
UFFICIO



pCon

Installation  
and activation  
procedure

# Choose your situation

## I'm a **subscriber user** of pCon.update

If you already pay for an open subscription of pCon.update, simply request and download the Manufacturer data through your existing installation of pCon.update DataClient. Once you've installed the data, start pCon.planner to use it! **You can close this presentation.**

## I'm a **free** user of pCon.update

Then **sign up for our free marketing version** of pCon.update. Once you've signed up, the Manufacturer data will be made available to you. **Follow the instructions in this presentation for a step-by-step guide.**

**Please note:** If you have several manufacturers using OFML data you can subscribe to the pCon.update service. Get more information about this service and benefits via the local partner at [info@easterngrpahics.nl](mailto:info@easterngrpahics.nl)

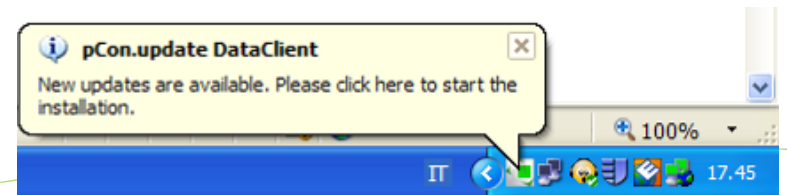
# Download and install

- If you still don't have pCon.planner ME, download and install it. Otherwise you can jump this step.
- It's possible to download **pCon.planner ME** and **pCon.update Data Client** from this link:  
<ftp://pconplanner:Aran-World1@www.aran.it>
- Follow the installation instructions

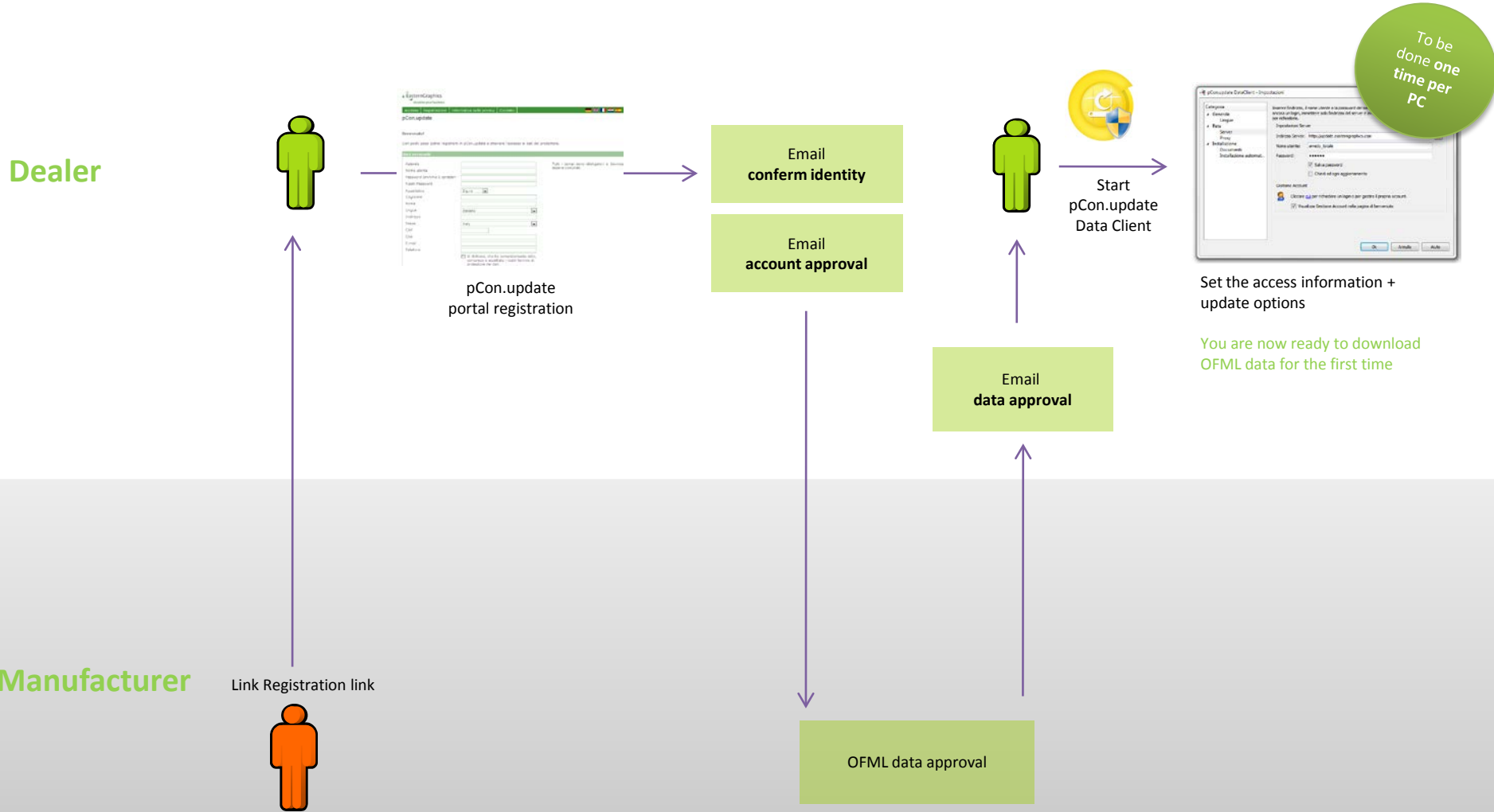


# What is pCon.update

- With pCon.update it's possible to **install** and have OFML data of several manufacturers **always up to date**.
- When an update is available, a **warning is visible** and the user can update the data with a few simple clicks
- pCon.update also **updates** all the **pCon applications**
- It's necessary a simple initial setting



# pCon.update – overview



# (1) Registration

- Use the following link to register on the pCon.update portal

<https://update.easterngraphics.com/registration/NFEN92>

Create **one user name per dealer**, share the user name and password with your colleagues. Don't use a personal password so you're able to share it.

The screenshot shows the registration page for EasternGraphics. The header includes the logo and navigation links: Login, Registration, Privacy policy, and Contact. Below the header, there is a welcome message and a note about exclusive access. The main section is titled 'Personal data' and contains a form with the following fields: Company, Username (filled with 'egr\_oliveira'), Password (masked with '\*\*\*\*\*'), Repeat Password, Title (dropdown menu with 'Mrs.' selected), Surname, Firstname, Language (dropdown menu with 'English' selected), Address, Country (filled with 'Italy'), ZIP, City, E-mail, and Phone. A checkbox is present at the bottom of the form with the text 'By setting this Flag you declare...'. A large green circular callout on the right side of the form contains the text '1 login per dealer'.

## (2) Identity confirmation

- After the registration you'll receive an email to confirm your identity
- With a click on the activation link you'll be sending a request to activate the account.

Dear Mr. Kachel,

You are receiving this e-mail, because you registered on the website of pCon

Please use the following link to activate your pCon.update account:  
[http://epodd.easterngraphics.com/typo3\\_egr\\_us/index.php?id=326&L=1&lid=86&f:](http://epodd.easterngraphics.com/typo3_egr_us/index.php?id=326&L=1&lid=86&f:)

By activating your account you will confirm your identity as applicant. You  
unlocked by an administrator.

You can delete your request to an user account with the following link:  
[http://epodd.easterngraphics.com/typo3\\_egr\\_us/index.php?id=326&L=1&lid=86&f:](http://epodd.easterngraphics.com/typo3_egr_us/index.php?id=326&L=1&lid=86&f:)

This is an automatically generated message.

## (3) Account approval

- You'll receive another email when your account has been approved.
- From this moment on you'll have access to the pCon.update portal

Dear Mr. Kachel,

Your user account has been unlocked by an administrator.

[With immediate effect you are granted access to the protected area.](#)

Username: mylogin

Password: mypass

This is an automatically generated message.



## (4) Access to the pCon.update portal

- Insert the user name and password defined in the registration to **login to the pCon.update portal** at [update.easterngraphics.com](http://update.easterngraphics.com)
- In the **profile** section it's possible to make changes to your profile at any time

EasternGraphics  
visualize your business

Accesso | Registrazione | Informativa sulla privacy

pCon.update

Benvenuti nel sito di pCon.update!

Sei già registrato sul nostro sito? Se no, vai a "Registrazione" o clicca [qui](#).

Utente

Password

login

[Dimenticato la password?](#)

Condizioni di utilizzo e riproduzione  
Copyright 1995-2011 EasternGraphics - Tutti i diritti riservati.

[Dimenticato la password?](#)

login

## (5) Notification for data access

- You'll receive an email when Manufacturer has approved access to their data
- You're now ready to use pCon.update DataClient to install the OFML data into your system

Dear Mr. Kachel,

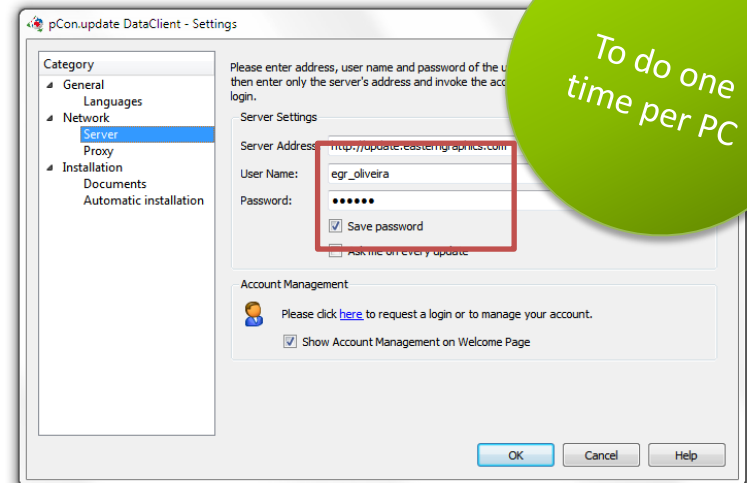
You have been activated by the manufacturer "EasternGraphics srl" to use their data via pCon.update.

You can now download them using pCon.update Data Client.

# (6) pCon.update DataClient – Initial setup

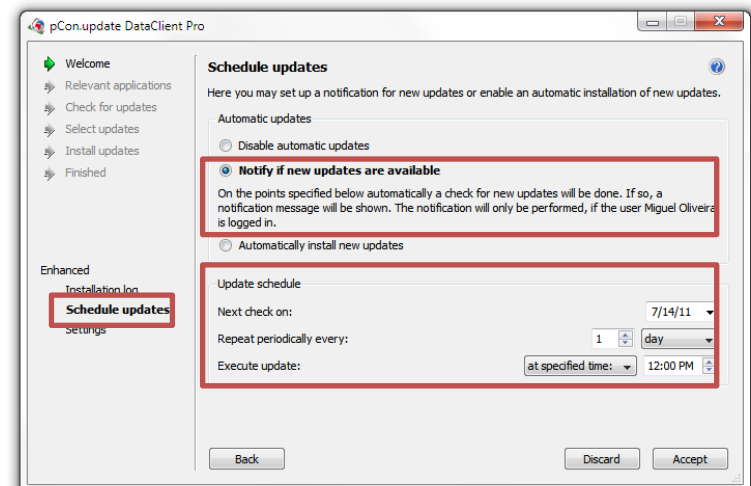
## Access

- Server Address: <http://update.easterngraphics.com>
- User Name: based on the registration
- Password: based on the registration



## Schedule Updates

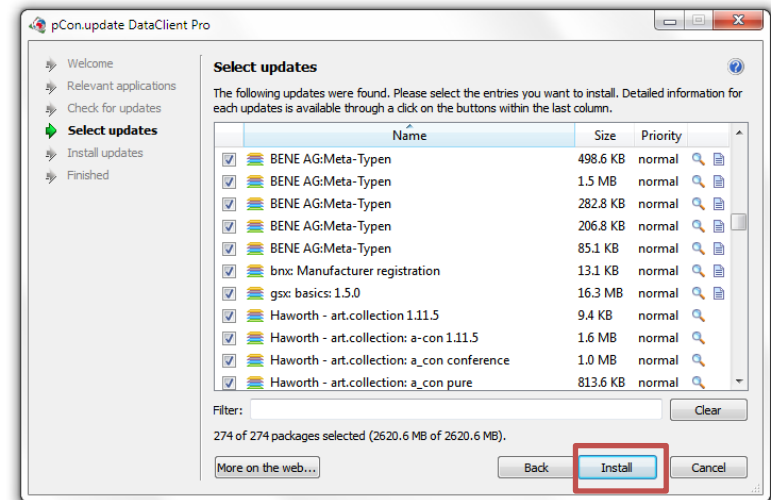
- Select the option 'Notify if new updates are available' and set the 'Repeat periodically every' to 'daily'
- When new updates are available a notification will be visible.



# (7) pCon.update DataClient – Updates

## Select updates

- Update all the data listed by simply clicking on the 'Install' button



## Install updates

- The process downloads the data, checks their validity and installs it.
- After the process is completed you can open any pCon module and re-start your work

