

NEWFORM
UFFICIO



pCon

Installation
and activation
procedure

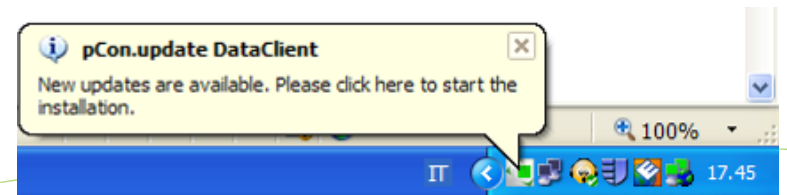
Download and install

- If you still don't have pCon.planner ME, download and install it. Otherwise you can jump this step.
- It's possible to download **pCon.planner ME** and **pCon.update Data Client** from this link:
<ftp://pconplanner:Aran-World1@www.aran.it>
- Follow the installation instructions

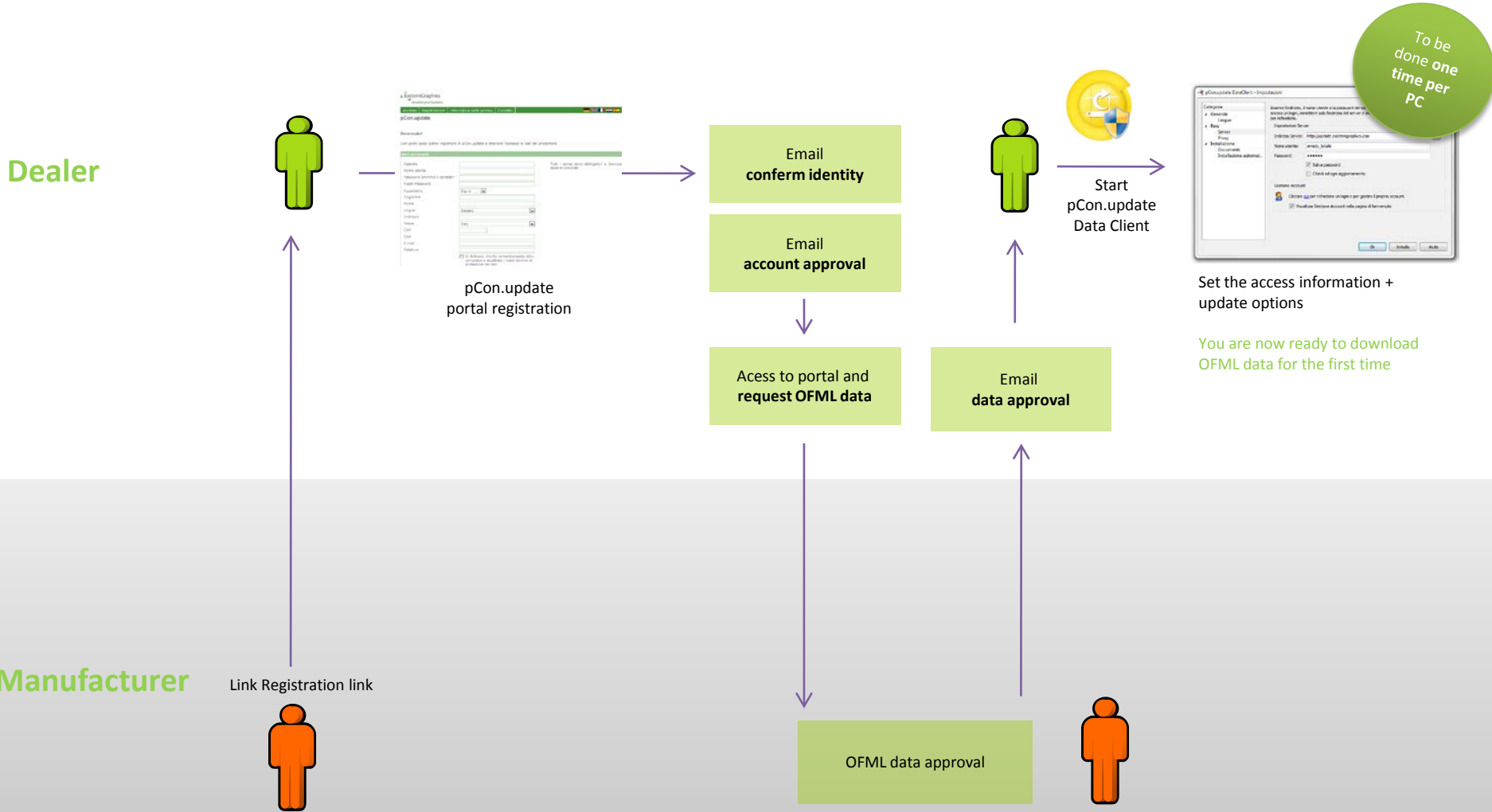


What is pCon.update

- With pCon.update it's possible to **install** and have OFML data of several manufacturers **always up to date**.
- When an update is available, a **warning is visible** and the user can update the data with a few simple clicks
- pCon.update also **updates** all the **pCon applications**
- It's necessary a simple initial setting



pCon.update – overview



(1) Registration

- Use the following link to register on the pCon.update portal

<https://update.easterngraphics.com/registration/NFOI94>

Create **one user name per dealer**, share the user name and password with your colleagues. Don't use a personal password so you're able to share it.

- **If you already have a login for pCon.update go to step (4)**

EasternGraphics
visualize your business

Login Registration Privacy policy Contact

pCon.update

Welcome!

With a few steps you can register to pCon.update and get exclusive access to your content.

Personal data

Please fill in form completely.

Company

Username egr_oliveira

Password (at least 6 characters) *****

Repeat Password

Title Mrs.

Surname

Firstname

Language English

Address

Country Italy

ZIP

City

E-mail

Phone

By setting this Flag you declare, that you have completely read, understood and accepted the terms and conditions of the pCon.update portal.

1 login per dealer

(2) Identity confirmation

- After the registration you'll receive an email to confirm your identity
- With a click on the activation link you'll be sending a request to activate the account.

Dear Mr. Kachel,

You are receiving this e-mail, because you registered on the website of pCon

Please use the following link to activate your pCon.update account:
http://epodd.easterngraphics.com/typo3_egr_us/index.php?id=326&L=1&lid=86&f:

By activating your account you will confirm your identity as applicant. You
unlocked by an administrator.

You can delete your request to an user account with the following link:
http://epodd.easterngraphics.com/typo3_egr_us/index.php?id=326&L=1&lid=86&f:

This is an automatically generated message.

(3) Account approval

- You'll receive another email when your account has been approved.
- From this moment on you'll have access to the pCon.update portal

Dear Mr. Kachel,

Your user account has been unlocked by an administrator.

[With immediate effect you are granted access to the protected area.](#)

Username: mylogin

Password: mypass

This is an automatically generated message.

(4) Access to the pCon.update portal

- Insert the user name and password defined in the registration to **login to the pCon.update portal** at update.easterngraphics.com
- In the **profile** section it's possible to make changes to your profile at any time
- In the **subscription** section you can request OFML data of several manufacturers

EasternGraphics
visualize your business

Accesso | Registrazione | Informativa sulla privacy

pCon.update

Benvenuti nel sito di pCon.update!

Sei già registrato sul nostro sito? Se no, vai a "Registrazione" o clicca [qui](#).

Utente

Password

login

[Dimenticato la password?](#)

Condizioni di utilizzo e riproduzione
Copyright 1995-2011 EasternGraphics - Tutti i diritti riservati.

Condicioni di utilizzo e riproduzione

Proteggere le tue informazioni
pCon

(5) OFML data request

- Go to the **subscription** section
- Select **Manufacturer** to request its OFML data
- Click on **Accept** at the end of the page to confirm your selections.
- You'll **receive an email** notification when the data is approved. You can then start **pCon.update Data Client**.

(6) Notification for data access

- You'll receive an email when the manufacturer has approved your access to their data
- The data approval is done by the manufacturer
- You're now ready to use pCon.update DataClient to install the OFML data into your system

Dear Mr. Kachel,

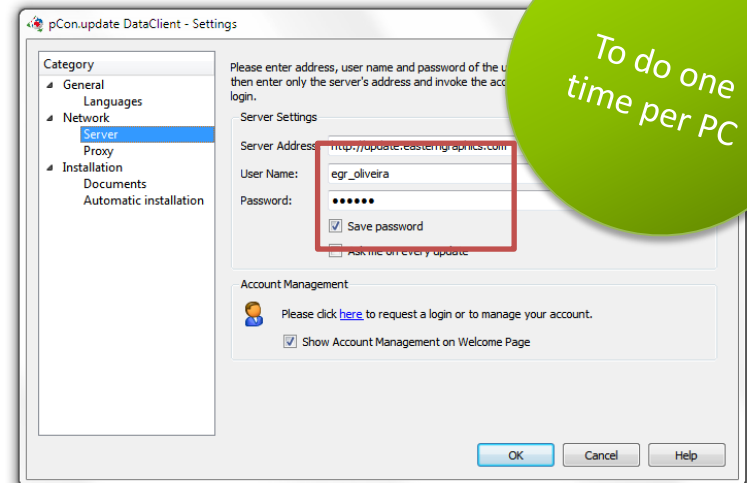
You have been activated by the manufacturer "EasternGraphics srl" to use their data via pCon.update.

You can now download them using pCon.update Data Client.

(7) pCon.update DataClient – Initial setup

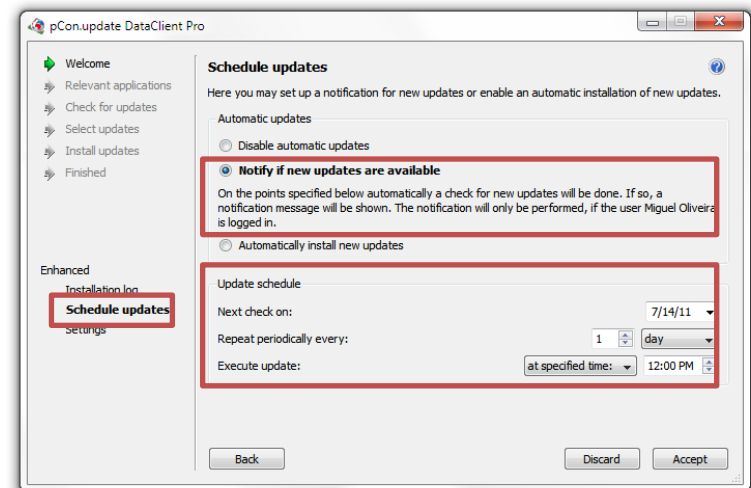
Access

- Server Address: <http://update.easterngraphics.com>
- User Name: based on the registration
- Password: based on the registration



Schedule Updates

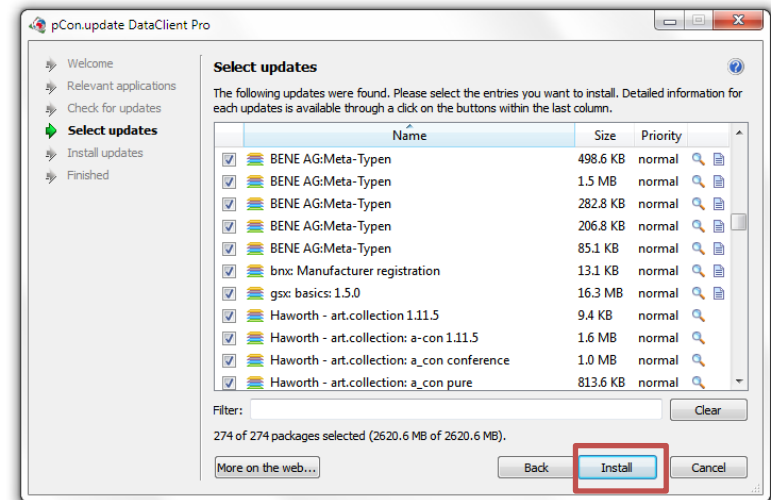
- Select the option 'Notify if new updates are available' and set the 'Repeat periodically every' to 'daily'
- When new updates are available a notification will be visible.



(8) pCon.update DataClient – Updates

Select updates

- Update all the data listed by simply clicking on the 'Install' button



Install updates

- The process downloads the data, checks their validity and installs it.
- After the process is completed you can open any pCon module and re-start your work

